

**f**

**ff**

**f**

**f**

*Department of Psychology, Center for Brain and Cognitive Sciences, Peking University, 5 Yihe Yuan Road, Beijing 100871, PR China*  
*Department of Neurology, University of California at Davis, VA Northern California Health Care System, 150 Mission Road, Martinez, CA 94553, USA*

2 2

---

Abstract

Objective

**f**

**f**

**ff**

**f**

**f**

**f**

**f**

Methods

**f**

**f**

**f**

2

f

f

f

f

f

f

ff

2 2

f

f

ff

f

f

f

f

ff

f

f

f

f

f

f

f

f

f

f

f

f

f

f

f

f

f

f

f

f

f

f

f

f

f







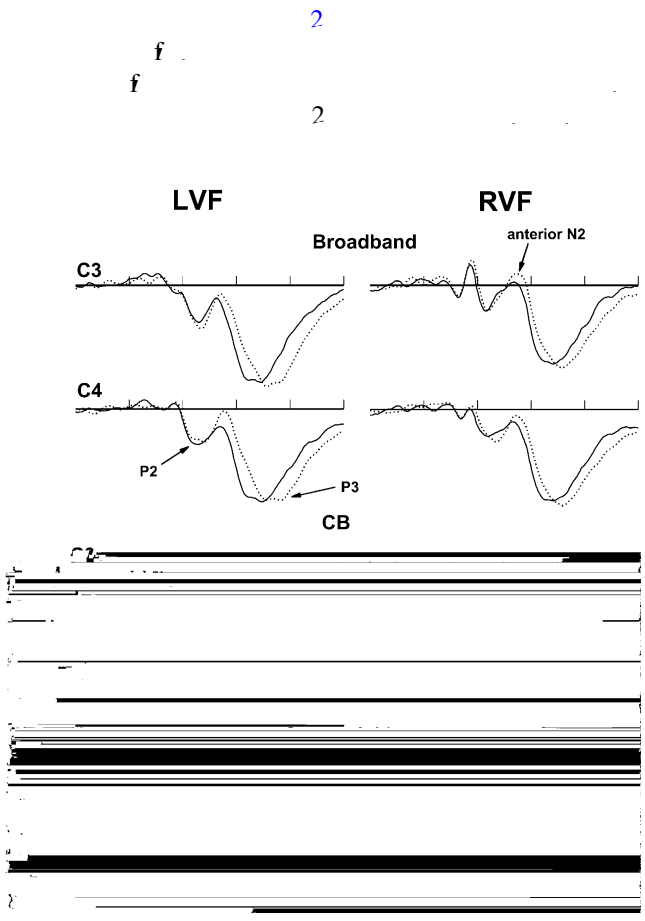
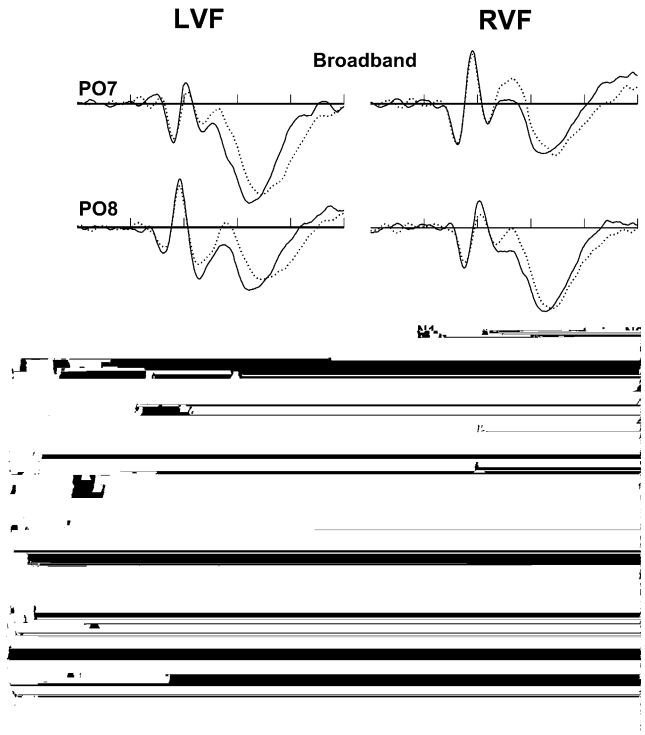








$\times$   $F(, ) = . p < .$   
 $f$   $ff$   
 $2$   $p < .$   
 $f$   $F(, ) = .$   
 $f$   $2$   $ff$   
 $F(, ) = . 2 p < . 2 ff$   
 $F(, ) = . 2 p < .$   
 $F(, ) = . 2 p < .$   
 $\times$   $f$   $f$   
 $F(, ) = . p < . f$   
 $f$   
 $ff$   
 $2$   
 $f$   $F(, ) = . 2 p < . 2$   
 $ff$   $F(, ) = . p < . f$   
 $f$   $2$   
 $2 p < . 2 f$   $2 F(, ) = .$   
 $2$   $f$   
 $p < . 2 F(, ) = . 2$   
 $F(, ) = . p < . 2$   
 $ff$   
 $22$   $f$   $2$   
 $F(, ) = . 2 p < .$   
 $2$   
 $f$   
 $\times$   $f$   $f$   
 $F(, ) = . 22 p < .$   
 $2$   
 $f$   
 $f$   $2$   
 $f$   $2$   
 $2$





$$F(x, y) = \dots$$

**f**  $F(, ) = . \quad p < .$

**ff**

**f**

**f**

**f**

**f**

**f**

**ff**

**f**

**f**

**f**

**f**

f  
f f f  
f f ff f  
2  
f f  
f ff  
f f  
f 2 2  
f f f  
f f f  
f f f  
f f f  
f f f

f  
f  
f

References

f  
2  
f f  
2 2  
f  
2  
f  
ff f  
2  
f  
2

f 2 f ff  
2 f  
ff f  
f f 2 2  
2 2 f  
ff f f 2 f  
f 2 f